



AT3102 & AT3102-2
& AT3102-3
Cordless Phone



User's manual

1. IMPORTANT SAFETY INSTRUCTIONS

When using your telephone equipment, basic safety precautions should always be followed to reduce the risk of fire, electric shock and injury, including the following:

- Read and understand all the instructions.
- Follow all warnings and instructions marked on the product.
- Unplug this product from the wall outlet before cleaning. Do not use liquid cleaners or aerosol cleaners. Use a damp cloth for cleaning.
- Do not use this product near water (for example, near a bath tub, kitchen sink).
- Do not expose the telephone to direct sunlight or extreme cold environment. Do not put the telephone close to heating sources such as radiators, cookers, etc.
- Do not overload wall outlets and extension cords as this can result in the risk of fire or electric shock.
- Unplug this product from the wall outlet and refer servicing to distributor-under the following conditions:
 - When the power supply cord or plug is damaged or frayed.
 - If the product does not operate normally by following the operating instructions.
 - If the product has been dropped and the cabinet has been damaged.
 - If the product exhibits a distinct change in performance.
- Do not use the telephone to report a gas leak in the vicinity of the leak.

- Use only the supplied NiMH (Nickel Metal Hydride) batteries! The operation periods for the handsets are only applicable with the default battery capacities.
- The use of other battery types or non-rechargeable batteries/primary cells can be dangerous. These may cause interference and/or unit damages. The manufacturer will not be held liable for damage arising from such non-compliance.
- Do not use third party charging bays. The batteries may be damaged.
- Please note the correct polarity while inserting the batteries.
- Avoids to use battery in following conditions:
 - High or low extreme temperature during use, storage or transportation.
 - Replacement of a battery with an incorrect type that can defeat a safeguard.
 - Disposal of a battery into fire or a hot oven, or mechanically crushing or cutting of a battery, that can result in an explosion.
 - Leaving a battery in an extremely high temperature surrounding environment that can result in an explosion or the leakage of flammable liquid or gas.
 - Extremely high temperature and/or extremely low air pressure that can result in an explosion or the leakage of flammable liquid or gas.

CAUTION
RISK OF EXPLOSION IF BATTERY IS REPLACED BY AN INCORRECT TYPE.
DISPOSE OF USED BATTERY ACCORDING TO THE INSTRUCTIONS.

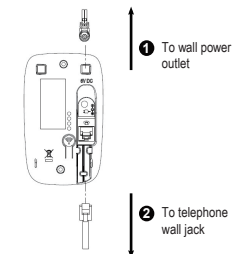
2. SET UP THE TELEPHONE

2.1 Package Contents

The package contains the following items:

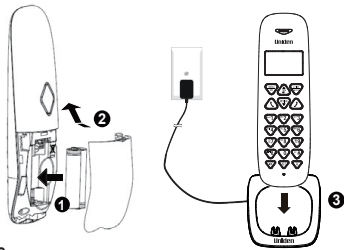
- | | |
|-------------------------------------|-------------------------------------|
| AT3102 Single Handset: | AT3102-2 Twins: |
| • 1 Handset | • 2 Handset |
| • 1 Base station | • 2 Base station |
| • 1 Power adaptor for base station | • 2 Power adaptor for base station |
| • 1 Telephone line cord | • 1 Telephone line cord |
| • 2 AAA NiMH rechargeable batteries | • 4 AAA NiMH rechargeable batteries |
| • User's manual | • User's manual |
| • Warranty card | • Warranty card |

2.2 Connect the Base



- NOTES**
- Use only power adaptor provided for the base station / Charger.
 - For PLUGGABLE EQUIPMENT, the socket-outlet (power adaptor) shall be installed near the equipment and shall be easily accessible.
 - Caution: To maintain the compliance with the RF exposure requirement, the Base Unit shall be installed and used such that parts of user's body other than hands are maintained at a distance of 20 cm or more.

2.3 Install and Charge the Handset Battery

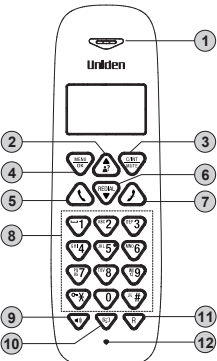


NOTES

- Use only AAA, 1.2V, 300mAh, NiMH rechargeable batteries for handset unit.
- Disconnect the telephone line from the equipment before open the battery door
- If you do not use the handset for a long time, disconnect and remove the battery to prevent possible leakage.

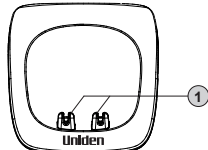
3. GET TO KNOW YOUR PHONE

3.1 Overview of the Handset



- EARPIECE
- CALLS / VOL ▲
- C / INT / MUTE
- MENU / OK
- TALK
- REDIAL / VOL ▼
- OFF
- ALPHANUMERIC KEYPAD, * (STAR), # (HASH)
- SPEAKERPHONE
- PHONEBOOK
- RECALL R
- MICROPHONE

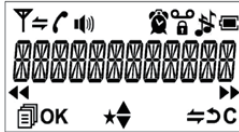
3.2 Overview of the Base Station



- CHARGING CRADLE
For charging the handset.

3.3 Handset LCD display icons and symbols

The LCD display gives you information on the current status of the telephone.



Display icons	Icons can be Steadily On (visible), Flashing or Off (not visible)
	Icons can be Steadily On (visible), Flashing or Off (not visible).
	Steadily on when the handset is with reception range. Flashes when out of range or not registered to the base.
	Steadily on when an intercom is in progress. Flashes when there is an incoming intercom call.
	Steadily on when a call is in progress.
	Steadily on when the ringer is switched off.
	Steadily on when an alarm is set. Flashes when the alarm time set before reaches.
	Steadily on when the keypad is locked.
	Steadily on when a message is received at the telephone service provider.
	Steadily on when the battery is fully charged. Whole icon flashes when the battery is charging.
	Flashes when low battery power level is detected and the handset needs charging.
	Steadily on when more characters are existed before the text currently displayed.
	Steadily on when more characters are existed after the text currently displayed.
	Press to select more menu options if applicable.
	Press to confirm the current selection if applicable.
	Press to initial an intercom call when idle.
	Press to go back to previous menu level or cancel the current action if applicable.
	Press to clear a character or stop the alarm if applicable, press to mute / unmute during a call.
	Steadily on when you have received missed calls.
	Steadily on when the speakerphone is turned on.

3.4 Menu Navigation

In idle mode,
Press **MENU/OK** → **▲ / ▼** to scroll to a menu option → Press **MENU/OK** to select.
-OR-
Press **C / INT / MUTE** to return to previous screen.
-OR-
press and hold **C / INT / MUTE** to return to idle mode.

CALL LIST	PHONEBOOK	BS SETTINGS
Review Call List Under a selected Call List entry: ADD TO PB DELETE DELETE ALL DETAILS	Under a selected Phonebook entry: ADD VIEW EDIT DELETE DELETE ALL PB STATUS	DELETE HS DIAL MODE FLASH TIME CHANGE PIN

HS SETTINGS	REGISTRATION	DEFAULT
ALARM RING SETUP TONE SETUP LANGUAGE RENAME HS HS DISPLAY AUTO ANSWER DATE & TIME	PIN?	PIN?

4. USE YOUR PHONE

4.1 Switch On/Off the Handset

- Press and hold to turn on or off.

4.2 Make a Call

- Enter phone number. Press **TALK /** .
- Preparatory Dialing
Enter the phone number and press or to dial the number. Press **<C>** to clear the entry.
- Direct Dialing
Press or to take the line and enter the phone number.
- Call from the phonebook
Press to access the phonebook and press **▲ / ▼** to select the desired phonebook entry. Press or to dial out to the selected phonebook entry. Alternatively, press **MENU/OK** to access the phonebook to get the desired phonebook entry.
- Call from the Call List
Press **▲** to access the Call List and press **▲ / ▼** to select the desired Call List entry. Press or to dial out to the selected Call List entry. Alternatively, press **MENU/OK** to access the Call List from the main menu.
- Call from the redial list
Press **▼** to access the redial list and press **▲ / ▼** to select the desired redial number. Press or to dial out to the selected redial number.
- Call timer
Your handset automatically times the duration of every call. The call timer will display a few seconds after the call has made. It is shown in hours, minutes and seconds format (HH:MM:SS).

4.3 Answer an Incoming Call

- If the handset is not on the charging cradle:
When the phone rings, press or to answer a call.
- If the handset is on the charging cradle or the base station and if AUTO ANSWER is set to ON:
When the phone rings, pick up the handset to answer a call.

4.4 Adjust Listening Volume During a Call

There are 5 levels (VOLUME 1 to VOLUME 5) to choose from for each of earpiece and handsfree volume. During a call:
Press **▲ / ▼** to select volume 1-5. The current setting is shown. When you end the call, the setting will remain at the last selected level.

4.5 Mute/unmute a Call (Microphone Off/On)

You can talk to someone nearby without letting the caller hear you during a call.
During a call:
Press **C / INT / MUTE** to mute the microphone and "MUTED" will display on the LCD. Your caller cannot hear you. Press **C / INT / MUTE** again to unmute the microphone.

4.6 End a Call

Press / OFF.
-OR-
Place the handset on the base.

4.7 Silent Mode (Turn the Handset Ringer On/Off)

Press and hold ***** .

4.8 Turn the Keypad Lock On/Off

Press and hold **#**.

4.9 Redial

- Redial a Number from the Redial List
 - In idle mode, press **▼** to access the redial list.
Remarks: If redial entry with name, press **#** to view the number.
 - Press **▲ / ▼** to browse the redial list.
 - Press or to dial to the selected redial number.
Note: If there are no numbers in the redial list, the display shows "EMPTY".

4.9.2 Store a Redial Number into the Phonebook

- Follow Steps 1 and 2 in section 4.9.1.
- Press **MENU/OK** and **▲ / ▼** to select **ADD TO PB**.
- Press **MENU/OK** to enter the name.
- Press **MENU/OK** to store the redial number into the phonebook.
- Press **MENU/OK** to select phonebook melody 1-10.
- Press **▲ / ▼** to browse the melody list. The respective melody will be played when browsing the melody list.
- Press **MENU/OK** to confirm.

4.9.3 Delete a Redial Number

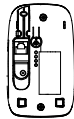
- Follow Steps 1 and 2 in section 4.9.1
- Press **MENU/OK** and **▲ / ▼** to select **DELETE**.
- Press **MENU/OK** to confirm.

4.9.4 Delete the Entire Redial List

- Follow Steps 1 and 2 in section 4.9.1
- Press **MENU/OK** and **▲ / ▼** to select **DELETE ALL**.
- Press **MENU/OK** to confirm.
- Press **MENU/OK** to confirm again.

4.10 Find the Handset (PAGING)

- Press on the base.
- Press **TALK / MUTE / OFF** on handset, or
- Press on the base to stop paging.



4.11 Make an Internal Call (Only for at least 2 registered handsets)

This feature is only applicable when there are at least two registered handsets. It allows you to make internal calls, transfer external calls from one handset to another handset and make conference calls. If the called handset is not answered within 60 seconds, the called handset will stop ringing and the calling handset will return to standby mode.

4.11.1 Intercom Another Handset

- In idle mode, press **C / INT / MUTE** and the registered handsets will display except the calling handset.
- Enter the desired handset number to intercom with.
- The called handset rings and press or on the called handset to establish the internal call.
Note:
• If only one handset is registered to the base station, press **C / INT / MUTE** will display "NOT POSSIBLE".
• If two handsets are registered to the base station, press **C / INT / MUTE** will connect to another handset immediately.
- Call All Handsets (for more than 2 registered handsets only)
 - In idle mode, press **C / INT / MUTE** and the registered handsets will display.
 - Press **<KEY 9>** to ring to all registered handsets.

4.11.3 Transfer an External Call to another handset

- During an external call:
- Press **MENU/OK** and **▲ / ▼** to select **INTERCOM**.
 - Press **MENU/OK** to select the desired handset to intercom with.

- The external call is put on hold automatically and the called handset rings.
- Press on the called handset to establish an internal call.
- Press OFF on the calling handset or put the calling handset on the charging cradle to end the current call with the external party.
- The external call is transferred to the called handset.

4.12 Make a 3-way Conference Call

The conference call feature allows one external call to be shared with two handsets (in intercom). The three parties can share the conversation and no network subscription is required.
During an external call:
1. Follow Steps 1 to 4 in section 4.11.3.
2. Press and hold ***** key on the calling handset to establish the conference call.
Any handset hangs up during a conference call will leave the other handset still in connection with the external call.

5. PHONEBOOK

Your phone can store up to 20 private phonebook entries with names and numbers. Each phonebook entry can have a maximum of 20 digits for the phone number and 12 characters for the name. You can also select different ringtones for your phonebook entries. Phonebook entries are stored alphabetically by name.

5.1 Store a Number Entry in the Phonebook

→ **MENU/OK** → **▲ / ▼** → **ADD** → **MENU/OK** → Enter name → **MENU/OK** → Enter number → **MENU/OK** → **▲ / ▼** → **MELODY 1 - MELODY 10** → **MENU/OK**.

NOTE: If there is no entry in the list, the display shows "EMPTY".

5.2 Dial an Entry

→ **▲ / ▼** → (a desired entry) → or to dial out.

5.3 Edit a Phonebook Entry

→ **▲ / ▼** → (a desired entry) → **MENU/OK** → **▲ / ▼** → **EDIT** → **MENU/OK** → Enter name → **MENU/OK** → Enter number → **MENU/OK** → **▲ / ▼** → **MELODY 1 - MELODY 10** → **MENU/OK**.

5.4 Delete a Phonebook Entry

→ **▲ / ▼** → (a desired entry) → **MENU/OK** → **▲ / ▼** → **DELETE** → **MENU/OK**.

5.5 Delete All Phonebook Entries

→ **▲ / ▼** → (a desired entry) → **MENU/OK** → **▼ / ▲** → **DELETE ALL** → Press **MENU/OK** twice.

5.6 Check Number of Phonebook Entry Used

You can check how many entries have been occupied in your phone and how many phonebook entries are available for you to store in the phonebook.
 → **MENU/OK** → **▲ / ▼** → **PB STATUS** → **MENU/OK**.

6. PHONE SETTINGS

Your phone comes with a selection of settings that you can change to personalize your phone the way you like it to work.

6.1 Date and Time Settings

You will need to set the correct time and date so that you know when you received answering machine (applicable to model with answering machine) or call list entries.

6.1.1 Set the Date Format

MENU/OK → **▲ / ▼** → **HS SETTINGS** → **MENU/OK** → **▲ / ▼** → **DATE & TIME** → **MENU/OK** → **▲ / ▼** → **DATE FORMAT** → **MENU/OK** → **▲ / ▼** → **DD-MM-YY / MM-DD-YY** → **MENU/OK**.

6.1.2 Set the Time Format

MENU/OK → **▲ / ▼** → **HS SETTINGS** → **MENU/OK** → **▲ / ▼** → **DATE & TIME** → **MENU/OK** → **▲ / ▼** → **TIME FORMAT** → **MENU/OK** → **▲ / ▼** → **12 HR / 24 HR** → **MENU/OK**.

6.1.3 Set the Time

MENU/OK → **▲ / ▼** → **HS SETTINGS** → **MENU/OK** → **▲ / ▼** → **DATE & TIME** → **MENU/OK** → **▲ / ▼** → **SET TIME** → **MENU/OK** → Enter time → **MENU/OK** → **▲ / ▼** → **AM or PM** → **MENU/OK**.

6.1.4 Set the Date

MENU/OK → **▲ / ▼** → **HS SETTINGS** → **MENU/OK** → **▲ / ▼** → **DATE & TIME** → **MENU/OK** → **▲ / ▼** → **SET DATE** → **MENU/OK** → Enter Date → **MENU/OK**.

6.2 Handset Settings

6.2.1 Alarm
MENU/OK → **▲ / ▼** → **HS SETTINGS** → **MENU/OK** → **▲ / ▼** → **ALARM** → **MENU/OK** → **▲ / ▼** → **ON / OFF**.
If ON is selected:
MENU/OK → Enter time → **MENU/OK** → **AM or PM** → **MENU/OK** → You will need to set the snooze function → **▲ / ▼** → **ON / OFF** → **MENU/OK**.

6.2.2 Set the Ringer Melody for External Calls

MENU/OK → **▲ / ▼** → **HS SETTINGS** → **ENU/OK** → **▲ / ▼** → **RING SETUP** → **MENU/OK** → **▲ / ▼** → **EXT. RING** → **MENU/OK** → **▲ / ▼** → **MELODY 1 - MELODY 10** → **MENU/OK**.

6.2.3 Set the Ringer Melody for Internal Calls

MENU/OK → **▲ / ▼** → **HS SETTINGS** → **MENU/OK** → **▲ / ▼** → **RING SETUP** → **MENU/OK** → **▲ / ▼** → **INT. RING** → **MENU/OK** → **▲ / ▼** → **MELODY 1 - MELODY 10** → **MENU/OK**.

6.2.4 Set the Ringer Volume

MENU/OK → **▲ / ▼** → **HS SETTINGS** → **MENU/OK** → **▲ / ▼** → **RING SETUP** → **MENU/OK** → **▲ / ▼** → **RING VOLUME** → **MENU/OK** → **▲ / ▼** → **VOLUME 1 - VOLUME 5**, or **VOLUME OFF** → **MENU/OK**.

6.2.5 Set Alert Tones

A single beep is emitted when you press a key. You can turn on or off the key tone. You can also turn on the alert tones when low battery and out of range are detected. Low battery tone will be emitted while you are talking with the phone to alert you that you need to charge your battery. Out of range tone will be emitted when the handset is out of range from the base.
MENU/OK → **▲ / ▼** → **HS SETTINGS** → **MENU/OK** → **▲ / ▼** → **TONE SETUP** → **MENU/OK** → **▲ / ▼** → **KEY TONE / BATTERY TONE / OUT OF RANGE** → **MENU/OK** → **▲ / ▼** → **ON / OFF** → **MENU/OK**.

6.2.6 Rename the Handset

MENU/OK → **▲ / ▼** → **HS SETTINGS** → **MENU/OK** → **▲ / ▼** → **RENAME HS** → **MENU/OK** → **▲ / ▼** → Enter name → **MENU/OK**.

6.2.7 Set the Handset Language

MENU/OK → **▲ / ▼** → **HS SETTINGS** → **MENU/OK** → **▲ / ▼** → **LANGUAGE** → **MENU/OK** → **▲ / ▼** → (The desired language) → **MENU/OK**.

6.2.8 Set the Handset Display Information

MENU/OK → **▲ / ▼** → **HS SETTINGS** → **MENU/OK** → **▲ / ▼** → **HS DISPLAY** → **MENU/OK** → **▲ / ▼** → **HANDSET NAME / TIME** → **MENU/OK**.

6.2.9 Set the Auto Answer

MENU/OK → **▲ / ▼** → **HS SETTINGS** → **MENU/OK** → **▲ / ▼** → **AUTO ANSWER** → **MENU/OK** → **▲ / ▼** → **ON / OFF** → **MENU/OK**.

6.3 Base Settings

6.3.1 De-register a Handset

You are requested to enter the 4-digit PIN in order to de-register a handset from the base station. The antenna icon on the de-registered handset will blink.
Note: You cannot de-register the handset that you are currently using.
The default system PIN code is 0000.

MENU/OK → **▲ / ▼** → **BS SETTINGS** → **MENU/OK** → **▲ / ▼** → **DELETE HS** → **MENU/OK** → Enter PIN (Default: 0000) → **MENU/OK** → **▲ / ▼** → Select handset you want to de-register → **MENU/OK**.

6.3.2 Set the Dial Mode

The dial mode settings is country dependent. Please contact your local service provider for the correct settings.

MENU/OK → **▲ / ▼** → **BS SETTINGS** → **MENU/OK** → **▲ / ▼** → **DIAL MODE** → **MENU/OK** → **▲ / ▼** → **TONE / PULSE** → **MENU/OK**.