

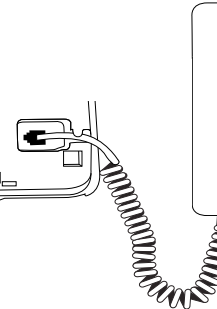
Uniden

AT4503 User's Guide

Corded/Cordless Telephone

Your new telephone system is EXPANDABLE up to 4 handsets

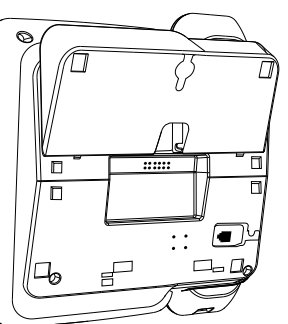
- Plug one end of the coiled cord into the jack at the bottom of the telephone base. Plug the other end of the coiled cord into the bottom of the cord handset, making sure that the plug is snapped into place and flush with the bottom of the handset. Then route the coiled cord through the tabbed slot as shown below.



- Route the telephone line cord through the channel, leaving about 2 inches from the end of the channel for plugging into the wall jack.
- Route the power adapter cord through the channel, leaving about 2 inches from the end of the channel for plugging into the electrical outlet.

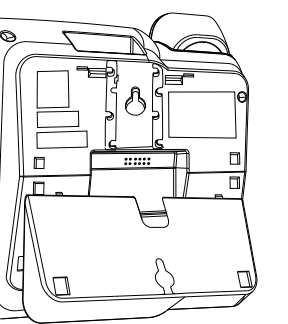
If you are placing the telephone on a desk, go to step 4. If you are mounting the telephone on a wall, go to step 5.

- To place the telephone base on a desk, align the holes at the upper part of the bottom of the telephone with the mounting studs on the base bracket as shown below. Lock the base bracket to the telephone base by putting the studs into the holes securely. The bottom of the telephone base now has a flat surface that is fit for the purpose of placing the phone on a desk.



If you are mounting the telephone on a wall, install the telephone base as described below.

- To place the telephone base on a desk, align the holes at the lower part of the bottom of the telephone with the studs on the base bracket as shown below. Lock the base bracket to the telephone base by putting the studs into the holes securely. The bottom of the telephone base now has a surface that is fit for the purpose of mounting the phone on a wall.



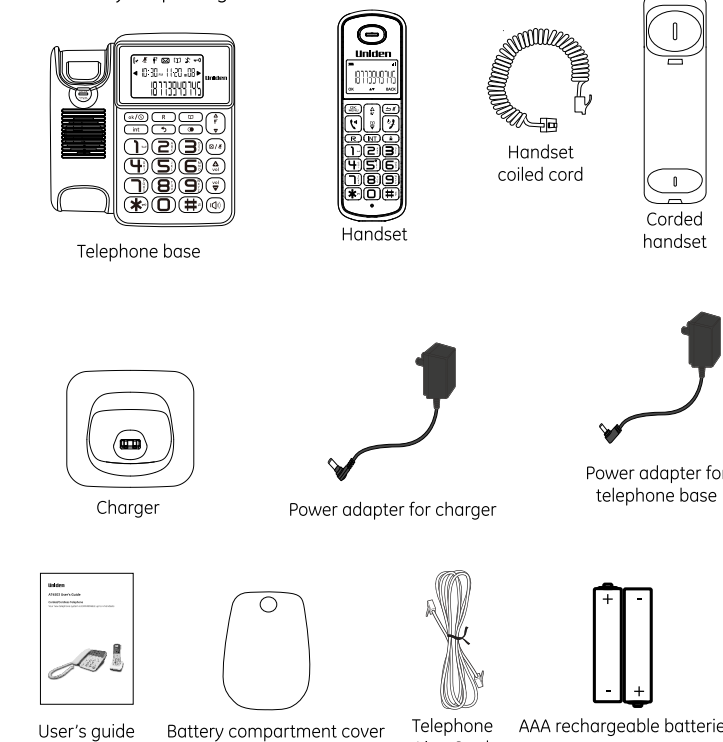
- Plug the telephone line cord into the jack on the wall plate. Align the holes on the telephone with the mounting studs of the wall plate and slide the telephone base down until it locks securely. Tie the excess cord neatly with a twist tie.
- Plug the power adapter into an electrical outlet. Be sure to avoid using an electrical outlet that is controlled by a wall switch.
- Lift the corded handset to test the connection. If you hear a dial tone, the installation is complete.

Model AT4503
Version 1.0 07/2005
Printed in China

Distributor: US Telephone Ltd
info@ustel.com.hk
www.ustel.com.hk

Parts Checklist

Make sure your package includes the items shown below.



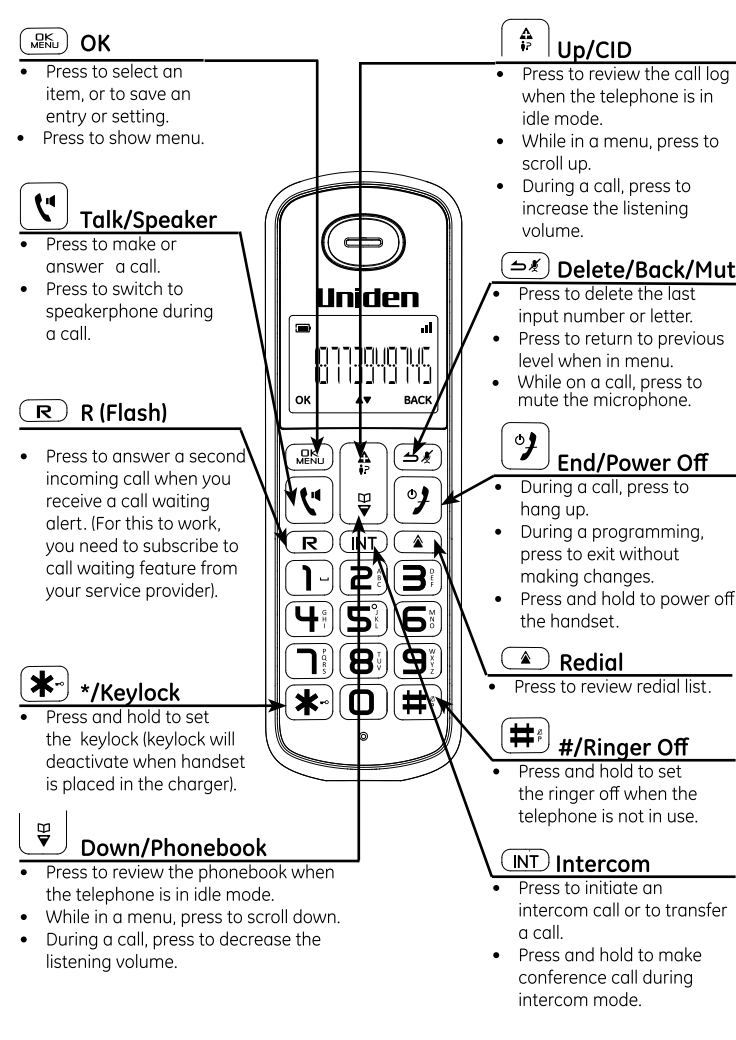
Wall mount installation

The telephone comes with a base bracket that you can install in two different ways.

To put the phone on a desk, connect the base bracket to the upper part of the bottom of the telephone base.

To mount the phone on a wall, connect the base bracket to the lower part of the bottom of the telephone base.

Handset layout

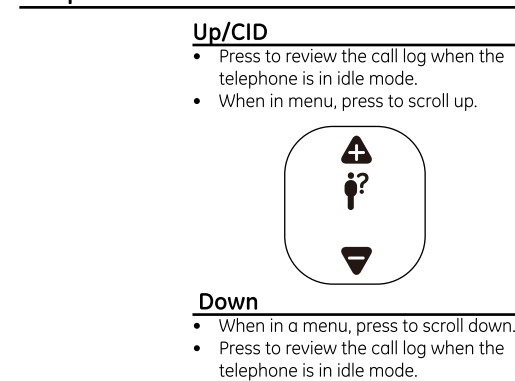


Telephone Base Display Icons

The following table gives a description of the screen display icons on the telephone base.

Icon	Meaning
	Displays when reviewing the phonebook.
	Displays when keypad lock is turned on.
	Flashes when there is an incoming call. Displays during a call.
	Displays when there is a new voice mail message. (This feature is available only if you have subscribed to voice mail service from your telephone service provider).
	Displays when there are old calls in the call list. Flashes when there are new calls in the call list.
	Displays when the mute function is turned on (i.e., the microphone is turned off).
	Displays when the ringer is turned off.

Telephone Base Scroll Wheel



Handset Display Icons

The following table gives a description of the screen display icons on the cordless handset.

Icon	Meaning
	Displays when the telephone base is within reception range. Flashes when the telephone base is out of range.
	Displays when reviewing the phonebook.
	Displays when the battery is full. Flashes slowly when battery has less than 50% capacity. Flashes rapidly when battery has less than 25% capacity.
	Flashes when there is an incoming call. Displays during a call.
	Flashes when there is a new voice mail message. (This feature is available only if you have subscribed to voice mail service from your telephone service provider).
	Displays when the alarm is set.
	Displays when the ringer is turned off.
	Displays when reviewing a call log and there is a missed call in the call log.
	Displays when the handset is in speakerphone mode.

Initial Settings (Cordless Handset Only)

Dialing mode

If you cannot make calls, change this setting according to your telephone line service. The default setting is "TONE".

- Press **[OK]**.
- Press **[*]** or **[#]**: PERSONAL SET -> **[OK]**.
- Press **[*]** or **[#]**: HANDESET TONE -> **[OK]**.
- Press **[*]** or **[#]**: RINGER VOLUME -> **[OK]**.
- Press **[*]** or **[#]**: Select the desired setting -> **[OK]**.

Registering a handset

The telephone system can support up to a total of 4 cordless handsets. Handsets that were included with your main base are pre-registered. To add or re-register a handset:

Telephone Base:

- Press and hold **[INT]** for 5 seconds.

Cordless Handset:

- Press **[*]** or **[#]**: ADVANCED SET -> **[OK]**.
- Press **[*]** or **[#]**: REGISTRATION -> **[OK]**.
- Enter the PIN (default: 0000) -> **[OK]**.
- Handset displays "WAITING".

Cordless Handset:

- You will hear a beep sound if the handset registration is successful. The handset screen displays "Handset X", where X is a number from 1 to 4.

NOTES:
1. An error tone will sound if the registration is not successful.
2. This product is compatible with model 30550 accessory handsets only.

Deregistering a handset

- Press **[*]** or **[#]**.
- Press **[*]** or **[#]**: ADVANCED SET -> **[OK]**.
- Press **[*]** or **[#]**: UNREGISTER -> **[OK]**.

Changing the PIN

The phone has a PIN (Personal Identification Number) associated with it. The default PIN is 0000. If you change your PIN, please make note of the new PIN. If you forget your PIN, you must reset your phone. To change the PIN:

- Press **[*]** or **[#]**.
- Press **[*]** or **[#]**: ADVANCED SET -> **[OK]**.
- Press **[*]** or **[#]**: CHANGE PIN -> **[OK]**.
- Enter the current PIN (default: 0000) -> **[OK]**.
- Enter the new PIN -> **[OK]**.

Reset

This feature allows you to restore all system settings, except the phonebook, to default settings. This feature can be useful, for example, if you have forgotten the PIN.

- Press **[*]** or **[#]**.
- Press **[*]** or **[#]**: ADVANCED SET -> **[OK]**.
- Press **[*]** or **[#]**: RESET -> **[OK]**.
- Press **[*]** or **[#]**.

Auto prefix

The prefix dialing is only working when the dialing is prepared dialing which mean enter the dial number during idle mode and the OFF HOOK. The product will check the first few digits (maximum 5 digits) depended on DETECT DIGIT data and if match with detect string, then replaced the detected string to the PREFIX NB (or Prefix nb maximum 10 digits). If the Detect string is all F (Detect string is blank, there will be no matching and the Prefix nb will be added). If the dial number start with #, *, or P, then the Prefix nb is not added (refer to ev4, 4 bis and 4ter).

- Press **[*]** or **[#]**.
- Press **[*]** or **[#]**: ADVANCED SET -> **[OK]**.
- Press **[*]** or **[#]**: AUTO PREFIX -> **[OK]**.
- Press **[*]** or **[#]**: Set the "DETECT DIGIT" -> **[OK]**.
- Press **[*]** or **[#]**: Set the "PREFIX NB" -> **[OK]**.

Recall time

This setting allows you to choose between SHORT, MEDIUM or LONG to accommodate the setting of your telephone service provider for using customer calling service, such as call waiting.

- Press **[*]** or **[#]**.
- Press **[*]** or **[#]**: ADVANCED SET -> **[OK]**.
- Press **[*]** or **[#]**: RECALL TIME -> **[OK]**.
- Press **[*]** or **[#]**: Select the desired setting -> **[OK]**.

Telephone Base Settings

Ringer volume

You can set the ringer volume on the telephone base from level 0 to level 5. Level 0 means the ringer is off.

To adjust the ringer volume, press **[▲]** or **[▼]** when in idle mode.

Corded handset receiver volume

You can set the corded handset receiver volume from level 1 to level 5. To adjust the corded handset receiver volume, lift the handset and press **[▲]** or **[▼]** when in dial mode.

Setting date and time

- Press and hold **[▲/▼]**: Enter time (HH:MM) and date (DD-MM) -> To correct your input, press **[*]/#**.
- Short press **[▲/▼]**.

Handset Settings

Display language

To change the display language:

- Press **[*]** or **[#]**.
- Press **[*]** or **[#]**: PERSONAL SET -> **[OK]**.
- Press **[*]** or **[#]**: LANGUAGE -> **[OK]**.
- Press **[*]** or **[#]**: Select the desired setting -> **[OK]**.

Ringer volume

You can set the handset ringer volume from level off to level 5 or turn the ringer off.

- Press **[*]** or **[#]**.
- Press **[*]** or **[#]**: PERSONAL SET -> **[OK]**.
- Press **[*]** or **[#]**: HANDESET TONE -> **[OK]**.
- Press **[*]** or **[#]**: RINGER VOLUME -> **[OK]**.
- Press **[*]** or **[#]**: Select the desired setting -> **[OK]**.

Ringer tone

You can select from 10 ringer tones (Melody 1 to 10).

- Press **[*]** or **[#]**.
- Press **[*]** or **[#]**: PERSONAL SET -> **[OK]**.
- Press **[*]** or **[#]**: HANDESET TONE -> **[OK]**.
- Press **[*]** or **[#]**: RING TONES -> **[OK]**.
- Press **[*]** or **[#]**: Select the desired setting -> **[OK]**.

Key tone

The Handset can be programmed to emit a tone with each key press.

- Press **[*]** or **[#]**.
- Press **[*]** or **[#]**: PERSONAL SET -> **[OK]**.
- Press **[*]** or **[#]**: HANDESET TONE -> **[OK]**.
- Press **[*]** or **[#]**: KEY BEEP -> **[OK]**.
- Press **[*]** or **[#]**: Select the desired setting -> **[OK]**.

Handset name

To change the name of the handset:

- Press **[*]** or **[#]**.
- Press **[*]** or **[#]**: PERSONAL SET -> **[OK]**.
- Press **[*]** or **[#]**: HANDESET NAME -> **[OK]**.
- Enter the handset name -> **[OK]**.

Auto hang-up

To set Auto Hang-Up "ON" or "OFF":

- Press **[*]** or **[#]**.
- Press **[*]** or **[#]**: PERSONAL SET -> **[OK]**.
- Press **[*]** or **[#]**: AUTO HANG-UP -> **[OK]**.
- Press **[*]** or **[#]**: Select the desired setting -> **[OK]**.

Clock & Alarm (Cordless Handset Only)

Time format

You can set the display format of time to be either 12-hour or 24-hour.

- Press **[*]** or **[#]**.
- Press **[*]** or **[#]**: CLOCK & ALARM -> **[OK]**.
- Press **[*]** or **[#]**: SET FORMAT -> **[OK]**.
- Press **[*]** or **[#]**: TIME FORMAT -> **[OK]**.
- Press **[*]** or **[#]**: Select the desired setting -> **[OK]**.

Date format

To change the date format:

- Press **[*]** or **[#]**.
- Press **[*]** or **[#]**: CLOCK & ALARM -> **[OK]**.
- Press **[*]** or **[#]**: SET FORMAT -> **[OK]**.
- Press **[*]** or **[#]**: DATE FORMAT -> **[OK]**.

Date and time

- Press **[*]** or **[#]**.
- Press **[*]** or **[#]**: CLOCK & ALARM -> **[OK]**.
- Press **[*]** or **[#]**: DATE/TIME -> **[OK]**.
- Enter the current year, month, and date by modifying 2 digits for each. For example, if the date you want is May 25, 2011, press [1][1][0][5][2][1][5].
- Enter the current hour and minute by modifying 2 digits for each. If the time is 3:34 p.m. and you have chosen the 24-hour time format, press [1][5][3][3][4].
- If the time is 3:34 p.m., and you have chosen the 12-hour time format, press [0][3][3][3][4].
- Press **[*]** or **[#]**: Select AM or PM -> **[OK]**.

- Press **[*]** or **[#]**: Select the desired setting -> **[OK]**.

Alarm

The alarm can be programmed to sound once or daily for one minute. The alarm setting is independent to each handset.

- Press **[*]** or **[#]**.
- Press **[*]** or **[#]**: CLOCK & ALARM -> **[OK]**.
- Press **[*]** or **[#]**: ALARM -> **[OK]**.
- Press **[*]** or **[#]**: Select the desired alarm option -> **[OK]**.

OFF: Turn alarm off (Settings completed).
ON ONCE: The alarm sounds once at the set time.
ON DAILY: The alarm sounds daily at the set time.

- Enter the desired hour and minute -> **[*]** or **[#]**: Select AM or PM for 12-hour time format.

Alarm tone

You can select from 3 alarm melodies.

- Press **[*]** or **[#]**.
- Press **[*]** or **[#]**: CLOCK & ALARM -> **[OK]**.
- Press **[*]** or **[#]**: ALARM TONE -> **[OK]**.
- Press **[*]** or **[#]**: Select the desired alarm tone -> **[OK]**.

Telephone Operations

To make a call (cordless handset)

- Press **[*]**.
- Dial the phone number after you hear the dial tone.

To make a call (telephone base)

- Lift the corded handset, or press **[*]**.
- Dial the phone number.

To pre-dial a call (cordless handset)

- Dial the phone number using the dial key pads. If you make an error when dialing, press **[*]** or **[#]** to erase the digit entered.
- Press **[*]**.

To pre-dial a call (telephone base)

- Dial the phone number using the dial key pads. If you make an error when dialing, press **[*]** or **[#]** to erase the digit entered.
- Lift the corded handset, or press **[*]**.

To answer a call (cordless handset)

When there is an incoming call, the LCD will light up.

- Press **[*]** to answer an incoming call.
NOTE: The screen shows the elapsed time as hours, minutes, seconds (hh-mm-ss) after you end the call.

To answer a call (telephone base)

When there is an incoming call, the LCD will light up.

Lift the corded handset, or press **[*]** to answer an incoming call.

To end a call (cordless handset)

Press **[*]** or place the handset in the charger to end a call.

To end a call (telephone base)

Press **[*]** or return the corded handset to the telephone base.

Muting a call

The mute function allows you to turn off the microphone while on a call. You can hear the other party but the other party cannot hear you.

Cordless Handset

- Press **[*]** or **[#]** to mute a call.
- Press **[*]** or **[#]**: resume conversation.
NOTE: The screen shows MUTE ON when mute feature is activated.

Telephone Base

- Press **[*]** or **[#]** to mute a call.

NOTE:

The mute icon (M) is displayed on the LCD when mute feature is activated.

- Press **[*]** or **[#]** to resume conversation.

Call waiting or call waiting with caller ID service

To use call waiting, you must subscribe to call waiting service from your telephone service provider. This feature allows you to receive calls while you are already talking on the phone. You will hear a call waiting alert tone when there is a second incoming call. If you subscribe to both caller ID and call waiting with caller ID services, the second caller's information is displayed after you hear the call waiting alert tone.

- Press **[*]** or **[#]**: answer the second incoming call.
- Press **[*]** or **[#]**: to switch between calls.

Redial List

To make a call using the redial list (cordless handset)

The last 10 telephone numbers previously dialed are stored in the redial list. To make a call using a phone number in the redial list:

- Press **[*]** or **[#]**.
- Press **[*]** or **[#]**: select the desired phone number -> **[*]** or **[#]** to dial.

Saving a phone number from the redial list to the phonebook (cordless handset)

- Press **[*]** or **[#]**.
- Press **[*]** or **[#]**: PHONEBOOK -> **[OK]**.
- Press **[*]** or **[#]**: DELETE -> **[OK]**.
- Enter the name by using the dial key pad -> **[OK]**.

Deleting phone number(s) from the redial list (cordless handset)

- Press **[*]** or **[#]**.
- Press **[*]** or **[#]**: select the desired phone number -> **[*]** or **[#]**.
- Press **[*]** or **[#]**: DELETE -> **[*]** or **[#]** twice to delete all the numbers.
- Press **[*]** or **[#]**: DELETE ALL -> **[OK]** twice to delete all the numbers.

To make a call using the redial list (telephone base)

The last 5 telephone numbers previously dialed are stored in the redial list.

To make a call using a phone number in the redial list:

- Press **[*]** or **[#]** on the scroll wheel of the telephone base to open the redial list.
- On the scroll wheel, press **[*]** or **[#]** to select the phone number.
- Lift the corded handset, or press **[*]** to make the call.

Saving a phone number from the redial list to the phonebook (telephone base)

- Press **[*]** or **[#]** on the scroll wheel of the telephone base to open the redial list.
- On the scroll wheel, press **[*]** or **[#]** to select the desired phone number.
- Press and hold **[*]** or **[#]** on the scroll wheel of the telephone base. The phonebook icon displays on the LCD screen.
- Press **[*]** or **[#]** to delete the selected phone number -> **[*]** or **[#]** appears on LCD screen.

Deleting phone number(s) from the redial list (telephone base)

- Press **[*]** or **[#]** on the scroll wheel of the telephone base to open the redial list.
- On the scroll wheel, press **[*]** or **[#]** to select the desired phone number.
- Short press **[*]** or **[#]** to delete the selected phone number -> **[*]** or **[#]** appears on LCD screen.
- Press and hold **[*]** or **[#]** to delete all the phone numbers -> **[*]** or **[#]** appears on LCD screen.

Adding a phonebook record (telephone base)

You

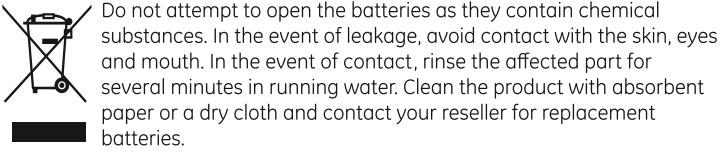
Troubleshooting guide

If your telephone system is not operating properly, first try this general reset procedures:

- Unplug all power adapters from the power outlets.
- Disconnect the telephone line cord from the base or modular jack.
- Remove the battery compartment covers and unplug all handset battery packs.
- After a few minutes, re-install all handset battery packs, making sure that the connectors are snug and the wires are not pinched before replacing all battery compartment covers.
- Plug the power adapters for the base and any chargers back into their power outlets. Be sure not to use outlets that are controlled by wall switches or timers.
- Place all handsets in the telephone base or chargers to charge without interruption for at least 30 minutes before use.
- Plug the line cord into the telephone base or modular jack and verify operation.

Problem	Cause/solution
Caller-ID information is not displayed.	<ul style="list-style-type: none">You must subscribe to Caller ID service from your service provider/telephone company. Make sure the base unit is plugged directly into a telephone modular jack. If you are using a line with DSL service, make sure you have properly installed the DSL filters supplied by your service provider.
While on a call, new caller-ID information is not displayed.	<ul style="list-style-type: none">You must subscribe to Caller ID with Call Waiting service from your service provider/telephone company.

Problem	Cause/solution
Cannot hear a dial tone.	<ul style="list-style-type: none">Increase the volume on the handset. Disconnect the telephone line cord from the base unit and connect it to a known working telephone. If the known working telephone operates properly, contact our customer support center for warranty information.
Handset does not ring.	<ul style="list-style-type: none">The ringer may be off. Increase the ringer volume. Make sure your handset is charged.
You experience audible static, noise, or fading in and out.	<ul style="list-style-type: none">The handset may be near the end of range limit. Move the handset closer to the base unit. If you are using a line with DSL service, make sure you have properly installed the DSL filters supplied by your service provider. Try to relocate the base unit and use the handset away from sources of electrical interference.

<p>Use only the supplied rechargeable battery or replacement battery.</p> <p>SAVE THESE INSTRUCTIONS</p>
<p>Environment</p> <p>Used equipment must be disposed of in compliance with current environmental protection regulations. You should return it to you reseller or dispose of it in an approved recycling center.</p> <p></p>

Uniden AT4503 中文說明書

電話主機設定

時間及日期

- 長按 鍵: 輸入時間(小時 : 分鐘)及日子(日期-月份), 如要更正輸入資料, 請按 鍵
- 按 鍵確定輸入

主機鈴聲音量

本機內有 6 種鈴聲音量可供選擇 (0 = 無 1 = 最低 5 =最高)

- 在話機開置時, 按 或 鍵調較音量

主機通話音量

本機設有 5 種音量可供選擇 (1 = 最低 5 =最高)

- 通話期間, 按 或 鍵調較音量

電話手機設定

設定手機屏幕語言

- 按 鍵

- 按 或 鍵選擇"PERSONAL SET", 按 鍵

- 按 或 鍵選擇"LANGUAGE", 按 鍵

- 按 或 鍵選擇所需語言, 按 鍵

手機名稱

- 按 或 鍵選擇"PERSONAL SET", 按 鍵

- 按 或 鍵選擇"HANDSET NAME", 按 鍵

- 輸入名字後, 按 鍵

自動掛斷通話功能

此功能方便直接在手機座放下手機後，立即掛斷通話

- 按 鍵
- 按 或 鍵選擇"PERSONAL SET", 按 鍵
- 按 或 鍵選擇"AUTO HANG-UP", 按 鍵
- 按 或 鍵選擇開 / 關 (ON / OFF), 按 鍵

- 按 或 鍵選擇所需音量, 按 鍵

手機鈴聲音量

手機內設有 10 種來電鈴聲可供選擇

- 按 或 鍵選擇"PERSONAL SET", 按 鍵

- 按 或 鍵選擇"HANDSET TONE", 按 鍵

- 按 或 鍵選擇"RING VOLUME", 按 鍵

- 按 或 鍵選擇所需音響, 按 鍵

手機會響提示音

- 按 或 鍵選擇"PERSONAL SET", 按 鍵

- 按 或 鍵選擇"HANDSET TONE", 按 鍵

- 按 或 鍵選擇所需提示音, 按 鍵

時間顯示格式

- 按 或 鍵選擇"PERSONAL SET", 按 鍵
- 按 或 鍵選擇"CLOCK & ALARM", 按 鍵
- 按 或 鍵選擇"SET FORMAT", 按 鍵
- 按 或 鍵選擇"DATE FORMAT", 按 鍵
- 按 或 鍵選擇日期顯示格式, 按 鍵

- 輸入日期, 如 2014 年 1 月 25 日, 請按 [1] [4] [0] [1] [2] [5]後按 鍵

* 24 小時制格式的輸入方式: [1] [7] [2] [0]

* 12 小時制格式的輸入方式: [0] [5] [2] [0]. 然後按 或 鍵

選擇 AM (早上) 或 PM (下午)

- 按 或 鍵選擇"PERSONAL SET", 按 鍵

- 按 或 鍵選擇"CLOCK & ALARM", 按 鍵

- 按 或 鍵選擇"SET FORMAT", 按 鍵

- 按 或 鍵選擇"DATE FORMAT", 按 鍵

- 按 或 鍵選擇日期顯示格式, 按 鍵

- 輸入日期, 如 2014 年 1 月 25 日, 請按 [1] [4] [0] [1] [2] [5]後按 鍵

* 24 小時制格式的輸入方式: [1] [7] [2] [0]

* 12 小時制格式的輸入方式: [0] [5] [2] [0]. 然後按 或 鍵

按鍵提示音

- 按 鍵
- 按 或 鍵選擇"PERSONAL SET", 按 鍵
- 按 或 鍵選擇"HANDSET TONE", 按 鍵
- 按 或 鍵選擇"KEY BEEP", 按 鍵
- 按 或 鍵選擇提示音開 / 關 (ON / OFF), 按 鍵

時鐘及鬧鐘設定 (只限手機使用)

時間顯示格式

時間可設定為 12 小時制或 24 小時制顯示

- 按 或 鍵選擇"PERSONAL SET", 按 鍵
- 按 或 鍵選擇"CLOCK & ALARM", 按 鍵
- 按 或 鍵選擇"SET FORMAT", 按 鍵
- 按 或 鍵選擇"TIME FORMAT", 按 鍵
- 按 或 鍵選擇時間顯示格式, 按 鍵

日期顯示格式

日期可設定為 DD/MM (日期/月份) 或 MM/DD (月份/日期)顯示

- 按 或 鍵選擇"PERSONAL SET", 按 鍵
- 按 或 鍵選擇"CLOCK & ALARM", 按 鍵
- 按 或 鍵選擇"SET FORMAT", 按 鍵
- 按 或 鍵選擇"DATE FORMAT", 按 鍵
- 按 或 鍵選擇日期顯示格式, 按 鍵

時間及日期

- 長按 鍵: 輸入時間(小時 : 分鐘)及日子(日期-月份), 如要更正輸入資料, 請按 鍵
- 按 鍵確定輸入

主機鈴聲音量

- 在話機開置時, 按 或 鍵調較音量

- 按 或 鍵選擇"PERSONAL SET", 按 鍵

- 按 或 鍵選擇"LANGUAGE", 按 鍵

- 按 或 鍵選擇所需語言, 按 鍵

- 按 或 鍵選擇"PERSONAL SET", 按 鍵

- 按 或 鍵選擇"LANGUAGE", 按 鍵

- 按 或 鍵選擇所需語言, 按 鍵

- 按 或 鍵選擇"PERSONAL SET", 按 鍵

- 按 或 鍵選擇"HANDSET NAME", 按 鍵

- 輸入名字後, 按 鍵

- 按 或 鍵選擇"PERSONAL SET", 按 鍵

- 按 或 鍵選擇"CLOCK & ALARM", 按 鍵

- 按 或 鍵選擇"SET FORMAT", 按 鍵

- 按 或 鍵選擇"DATE/TIME", 按 鍵

- 輸入日期, 如 2014 年 1 月 25 日, 請按 [1] [4] [0] [1] [2] [5]後按 鍵

* 24 小時制格式的輸入方式: [1] [7] [2] [0]

* 12 小時制格式的輸入方式: [0] [5] [2] [0]. 然後按 或 鍵

選擇 AM (早上) 或 PM (下午)

- 按 或 鍵選擇"PERSONAL SET", 按 鍵

- 按 或 鍵選擇"CLOCK & ALARM", 按 鍵

- 按 或 鍵選擇"SET FORMAT", 按 鍵

- 按 或 鍵選擇"DATE/TIME", 按 鍵

- 輸入日期, 如 2014 年 1 月 25 日, 請按 [1] [4] [0] [1] [2] [5]後按 鍵

* 24 小時制格式的輸入方式: [1] [7] [2] [0]

* 12 小時制格式的輸入方式: [0] [5] [2] [0]. 然後按 或 鍵

選擇 AM (早上) 或 PM (下午)

- 按 或 鍵選擇"PERSONAL SET", 按 鍵

- 按 或 鍵選擇"CLOCK & ALARM", 按 鍵

- 按 或 鍵選擇"SET FORMAT", 按 鍵

- 按 或 鍵選擇"TIME FORMAT", 按 鍵

- 按 或 鍵選擇時間顯示格式, 按 鍵

OFF 鬧鐘關閉

ON ONCE 鬧鐘只在設定時間響鬧一次

ON DAILY 鬧鐘在所設定的時間每天響鬧一次

- 按 或 鍵選擇"PERSONAL SET", 按 鍵

- 按 或 鍵選擇"CLOCK & ALARM", 按 鍵

- 按 或 鍵選擇"ALARM TONE", 按 鍵

- 按 或 鍵選擇所需提示音, 按 鍵

初次設定 (只限手機使用)

音響 / 脈衝撥號

- 按 鍵
- 按 或 鍵選擇"PERSONAL SET", 按 鍵
- 按 或 鍵選擇"ADVANCED SET", 按 鍵
- 按 或 鍵選擇"DIAL MODE", 按 鍵
- 按 或 鍵選擇"LIST", 按 鍵
- 按 或 鍵選擇"LIST", 按 鍵
- 按 或 鍵選擇"LIST", 按 鍵
- 按 或 鍵選擇"LIST", 按 鍵
- 按